

*Contact the  
Program Coordinators . . .*

Katie Pittman, Ph.D  
MIS Advisor  
Central Hall 139  
(541) 552-8204  
[Pittmank@sou.edu](mailto:Pittmank@sou.edu)



Susan Cain, MS, CPA (CA)  
AIS Advisor  
Central Hall 119  
(541) 552-6717  
[CainS@sou.edu](mailto:CainS@sou.edu)

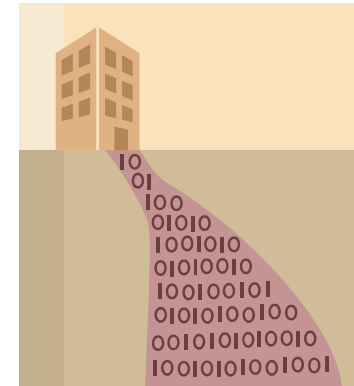


Al Case, MAcc, CPA (MA)  
AIS Advisor  
Central Hall 126  
(541) 552-6717  
[Casea@sou.edu](mailto:Casea@sou.edu)



**CBIS**  
**School of Business**  
Southern Oregon University  
1250 Siskiyou Blvd.  
Ashland, OR 97520  
(541) 552-6484  
[www.sou.edu/business](http://www.sou.edu/business)

# Certificate in Business Information Systems



Southern Oregon  
University  
School of Business

# Certificate in Business Information Systems

The increasingly critical role of information systems within organizations has created a strong demand for graduates who are knowledgeable about both information systems and business. This certificate program provides students with the opportunity to gain expertise in business software applications and to develop an in-depth knowledge of organizational information systems. Students enrolled in this certificate program will choose a focus area in either Accounting Information Systems (AIS) or Management Information Systems (MIS).

In size and scope, the certificate is between a minor and a major. To be awarded an AIS or MIS certificate, students must complete the course requirements listed below and requirements for a BA or BS degree at SOU or the transfer equivalent. All courses taken for the certificate must be completed with a grade of C or better. An average GPA of 2.5 or higher must be maintained in all certificate courses.

## Certificate Requirements . . .

### Program pre-requisites (16 credits)

BA 131 Business Computer Applications .....	4
BA 211 Accounting Information I.....	4
BA 213 Accounting Information II.....	4
BA 382 Management Information Systems .....	4

### Required Core Courses (12 credits)

BA 383 Adv Business App of Spreadsheets .....	4
BA 384 Adv Business App of Databases .....	4
CIS 200 Computer Science I .....	4

### Choose an Area of Focus **(AIS or MIS) (24 credits)**

#### Accounting Information Systems (AIS)

##### **Required Courses (16 credits)**

BA 351 Intermediate Accounting I.....	4
BA 352 Intermediate Accounting II.....	4
BA 451 Cost and Management Accounting .....	4
BA 454 Accounting Information Systems .....	4

##### **AIS Electives (8 credits)**

BA 409 <sup>1</sup> Practicum.....	4
BA 484 Business Information Systems Design .....	4
BA 488 Fundamentals of Project Management.....	4
BA 497 Advanced Management Information Systems .....	4
CS 257 Computer Science II .....	4
CS 346 Computer Forensics .....	4
Other CS/BA courses as approved .....	4-8

#### Management Information Systems (MIS)

##### **Required Courses (8 credits)**

BA 484 Business Information Systems Design .....	4
BA 497 Advanced Management Information Systems .....	4

##### **MIS Electives (16 credits)**

BA 409 <sup>1</sup> Practicum.....	4
BA 428 Applied Business Research .....	4
BA 488 Fundamentals of Project Management.....	4
CS 257 Computer Science II .....	4
CS 346 Computer Forensics .....	4
CS 310 IT: Legal and Ethical Issues.....	4
Other CS/BA/ courses as approved .....	4-12

##### **Footnotes:**

<sup>1</sup>Must be in a related area and must have approval in advance by certificate advisor.

## *The Campus . . .*

Southern Oregon University combines many of the best features of both private and public colleges: small-enrollment classes, teachers who know and work directly with their students; and a faculty and staff fully committed to education, both in and beyond the classroom. In the School of Business we prepare graduates who can write clearly, think critically, work effectively in groups and who are aware of the societal issues facing business here and abroad.



## *The Setting . . .*

Nestled at the base of the Siskiyou Mountains in the Rogue Valley of Southern Oregon, SOU is surrounded by forests, mountains, lakes, and rivers providing a spectacular setting for outdoor sports such as hiking, rafting, and skiing. In addition, the University and community are focal points of cultural activity gaining national recognition for the Oregon Shakespeare Festival and the Britt Music Festival.